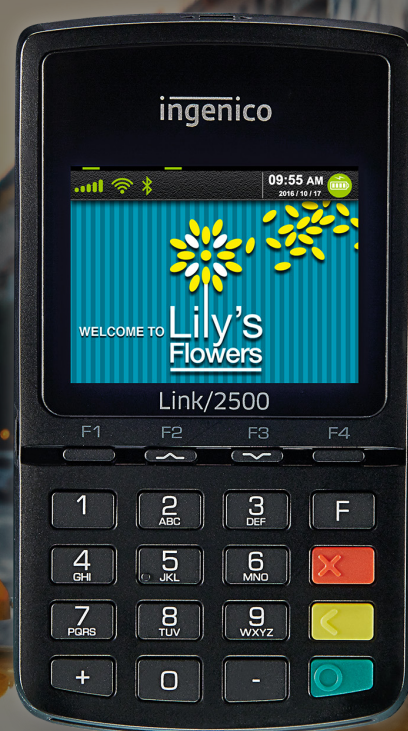


# Link/2500

Smart, sleek, simple.  
Payment excellence at its finest.

- **Specifically engineered for flexibility to accept all payment methods including NFC/Contactless, Apple Pay and Samsung Pay**
- **Optimize your payment solution for any existing infrastructure thanks to a fully versatile connectivity options**
- **Payment acceptance in your pocket!  
The ideal payment terminal for busy mobile merchants**



With the Link/2500, Ingenico brings payment acceptance solution to any mobile business.



#### Highest security

The Link/2500 is PCI-PTS 5.x certified. Its Telium Tetra OS uses the latest cryptographic schemes with future-proof key length.

#### All payment options

In addition to EMV Chip & PIN, swipe and sign, Link/2500 supports the broadest range of contactless standards allowing NFC couponing and wallet use cases.

#### Maximized network availability

In one single terminal, Link/2500 proposes a full spectrum wireless connectivity (3G, fallback GPRS, Dual SIM, Bluetooth and WiFi), offering flexibility to mobile merchant, while optimizing communication costs.

#### Designed for accessibility

Thanks to an integrated speaker which could provide vocal assistance and a real mechanical keypad with raised marking, Link/2500 is built for the most demanding use.

#### Designed for mobility

Featuring a pocket-sized, light weight and robust design the Link/2500 is the perfect business acceptance point for mobile merchants.

#### User-friendly and intuitive interface

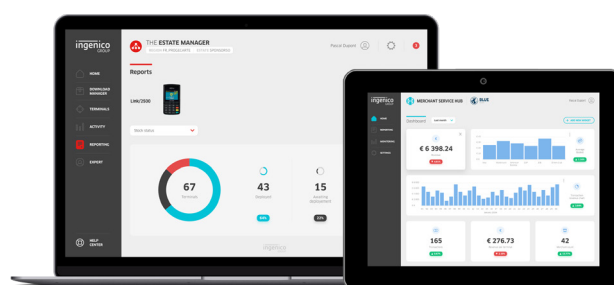
Featuring an edge design, Link/2500 is user oriented featuring thanks to a bright 2.4" color display touchscreen capability and a USB-C connector which can be plugged upside down.

#### Secure Telium TETRA OS

Backed by 30 years of experience and with its user-friendly interface, the Telium TETRA operating system includes the best security mechanisms embedded to protect transaction privacy and leverages Ingenico's unique portfolio of payment applications.

#### Digital receipt management

Link/2500 minimizes environmental footprint thanks to its paperless approach enabled by digital receipt while reducing the Total Cost of Ownership.



NAME			Link/2500	Link/2500 Touch
Processor	Crypto and Applications Processor	Cortex A5	●	●
Memory	Internal	256 MB Flash, 128 MB RAM 126 MB Flash, 128 MB RAM	● Option	● Option
OS		Telium TETRA	●	●
SIM / SAM		Up to 2	Option	
Card readers	Smart card	EMV Level 1, 50K lifespan	●	●
	Magstripe	ISO1/2/3, 100K lifespan	●	●
	Contactless	EMV / ISO14443	Option	Option
Display	Size	2.4" colour display, backlit, QVGA (240 x 320 pixels)	●	●
	Capacitive touchscreen		N/A	●
Keypad	Mechanical	20 keys, raised marking Backlighting keypad	● N/A	● Option
Audio	Buzzer		●	●
	Speaker		Option	Option
Batteries	Li-Ion	1200mAh (removable)	●	●
Terminal connections	USB Type C	Host & Slave	●	●

Terminal size	L x W x H	129 x 70 x 17 mm (5.07 x 2.75 x 0.67) 129 x 70 x 18 mm (5.07 x 2.75 x 0.70)	●	●
Weight	Full featured	155g (5.46oz) 167g (5.89z)	●	●
Environment	Charging T°	0°C to +40°C (32°F to 104°F)	●	●
	Operating T°	-10°C to +50°C (14°F to 122°F)	●	●
	Storage temperature	-20 to +55°C (-4°F to 131°F)	●	●
	Relative humidity, non condensing	85% non-condensing at 40°C (104°F)	●	●
Power supply	Terminal	5V 1A	Option	Option
Accessories	Cable	USB A to USB C: 1.5m	●	●
Security		PCI PTS 4.x & v5.x online & offline certified	●	●
Terminal connectivity	WAN	3G (Fallback GPRS) ; Dual SIM	Option	Option
	LAN	Bluetooth WiFi (Dual band)	Option	Option
	Apple IAP Chip		Option	Option
	Multicom	All connectivities in one single device	Option	Option



www.ingenico.com

**ingenico**  
GROUP