

# Self/4000

## Compact, engaging and scalable all-in-one payment solution for your self-service indoor and qualified outdoor kiosks

- Accept all payment methods including magstripe, EMV and NFC/Contactless and QR codes
- Improve the customer experience with the best-in-class self-service solution that offers a color screen, camera, sound alerts and additional support for visually impaired customers
- Simplify solution integration, operation and scalability
- Cut complexity in payment security implementation as a result of a full PCI PTS v5 configuration



Part of the new Self series range, the Self/4000 is an “all-in-one” device that equips vending machines and kiosks for secure payment acceptance.

**Highest security and easy PIN entry**

Fully PCI PTS 5.x compliant, the Self/4000 meets the highest and latest hardware and software mandatory requirements. It also complies with SRED and provides flexible options with add-on modules and open APIs.

The backlit mechanical keyboard makes entering the PIN easier, especially for the visually impaired.

**All payment methods**

The Self/4000 accepts all payment methods including magstripe, EMV and contactless. In addition, the device facilitates scanning for alternative payment methods based on existing and future QR codes (AliPay or WeChat Pay, etc.).

This card reader has a customizable RGB light input which facilitates user guidance and reinforces the level of security.

**Simple UI with sound alerts**

The solution provides a simple and easy-to-use customer interface with the color display and an embedded mechanical keyboard. By connecting an external speaker to the Self/4000, the device supports sound alerts for enhanced usability.

**Highly ruggedized**

Due to its robust design (IK09) and protection against water (IP44) the Self/4000 stands up to the most demanding indoor and qualified outdoor environments and a wide variety of adverse environmental conditions.

**Staying connected easily**

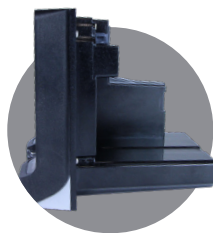
With the addition of multi-drop-bus (MDB) connectors (for vending, parking meters and other use cases), Bluetooth, 4G connectivity, the Self/4000 extends its capabilities and enables you to add optional modules to enhance flexibility.

**Seamless estate management**

The Self/4000 works seamlessly with Ingenico's estate management solution allowing integrators & operators to easily use and maintain the fleet of devices without complexity. It also allows them to remotely perform software updates and deliver day-to-day support for a hassle-free experience

**Protect your investment**

Ingenico's software components for self-service solutions from Telium 2 (including the MDB, EXE vending protocols, etc.) is compatible to work with the Self Series and its TETRA platform to facilitate the continuity of current business and scale further.



|                              |   |   |          |
|------------------------------|---|---|----------|
| <b>Processor</b>             | Application & Crypto processor            | Cortex A5   | ●        |
| <b>Memory</b>                | Internal                                  | 512 MB Flash, 512 MB RAM  | ●        |
|                              | External                                  | MicroSD up to 32GB  | ●        |
| <b>OS</b>                    |   | Telium TETRA  | ●        |
| <b>SAM</b>                   |   | 2 SAM ID-000  | ●        |
| <b>Card Readers</b>          | Contactless                               | EMV Level 1 compliant / ISO 14443 A/B/B'                            | ●        |
|                              | Smart Card                                | EMV Level 1 / 500k lifetime reads                                   | ●        |
|                              | Magstripe                                 | ISO 1/2/3, 500k lifetime reads                                      | ●        |
|                              | Hybrid card reader (horizontal insertion) | Utilizes RGB backlit LEDs to help prevent device tampering          | ●        |
|                              | Shutter                                   | Prevents dust and other non-card materials from entering the reader | ●        |
| <b>Display</b>               | Color                                     | 2.27" backlit, landscape mode (640x240)                             | ●        |
| <b>Keypad</b>                | Mechanical                                | 16 keys, backlit keys   | ●        |
| <b>Audio</b>                 | Buzzer                                    | Mono  | ●        |
|                              | Polyphonic sound WAV files                | Via external loudspeaker (not provided)                             | ●        |
| <b>Camera</b>                | In front of the device                    | 2MP - fixed focal (Honeywell barcode scanning library embedded)     | ●        |
| <b>Terminal Connectivity</b> | Wired                                     | Ethernet 10/100, 1xRJ45   | ●        |
|                              | Wireless (in slot #2)                     | 4G  | Optional |
|                              |   | Bluetooth   | Optional |
| <b>Terminal Connections</b>  | USB                                       | 1 x USB Slave (USB-B connector)<br>2 x USB Host (USB-A connector)   | ●        |
|                              | Serial                                    | 2 x RS232 (RJ11 connector)  | ●        |
|                              | Sound                                     | 1 x 2 PIN connector for external loudspeaker                        | ●        |
|                              | MDB                                       | 1x MDB Master + 1x MDB Slave  | Optional |
|                              |   |   |          |
| <b>Power Supply</b>          | External power supply                     | 9-16 V DC - 2 PIN connector   | ●        |
|                              | Power & MDB module (in slot #1)           | 10-45V DC   | Optional |
| <b>Terminal Size</b>         | EVA standard                              | SDM EVA   | Optional |
|                              | Overall W x H x D inches                  | 3.35 x 4.21 x 4.31" (85 x 107 x 109.6 mm)                           | ●        |
| <b>Weight</b>                |   | 22oz (620 g)  | ●        |
| <b>Environment</b>           | Operating temperature                     | -4°F to 158°F (-20°C to +70°C)                                      | ●        |
|                              | Storage temperature                       | -4°F to 158°F (-20°C to +70°C)                                      | ●        |
|                              | Operating humidity                        | 95% non-condensing at 131°F (+55°C)                                 | ●        |
| <b>Material</b>              | Plastic                                   | Compliant fire & smoke standard (EN 45 545-2)                       | ●        |
| <b>IP</b>                    | Ingress protection                        | IP44  | ●        |
| <b>IK</b>                    | Shock protection                          | IK09  | ●        |
| <b>Accessories</b>           |   | 2 PIN to 6 PIN adaptor cable for standard PSU                       | ●        |
|                              |   | EVA mounting plate  | ●        |
|                              |   | USB cables, serial cables   | Optional |
|                              |   | PSU   | Optional |
| <b>Security</b>              |   | PCI PTS 5.1 certified (No commissioning required)                   | ●        |

CA\_SELF4000\_V1... All rights reserved. This document is not binding and the specifications above can be modified without prior consent. © 2020



www.ingenico.ca

**ingenico**  
aWorldlinebrand