



The Estate Manager



The **new** Estate Manager

Tap into the full potential of your estate

ingenico
a Worldline brand

Empower your business with The Estate Manager

Advanced offer

Terminal Lifecycle Management

Maximize field-based terminal availability & usage

Advanced Remote Maintenance

Optimize your maintenance decisions and better support your merchants

Enhanced Connectivity

Stay connected in the most challenging communication environments

Preventive Maintenance

Know your estate and proactively anticipate repairs

Multimedia Content Management

Strengthen your brand image at merchants' locations

Enhanced Security Services & Support

Massively deploy security across your estate

Software & Merchant Provisioning, Security Services & Support, Connectivity

Streamline terminal deployment and manage transaction risks at point of sale

Core Offer

Key facts



48% of payment terminals' TCO

fall within the scope of advanced TMS solutions.*

* French market study on several acquirers and distributors



Terminal uptime is the #1 priority

of acquirers and estate owners, to maximize revenues and merchants' satisfaction



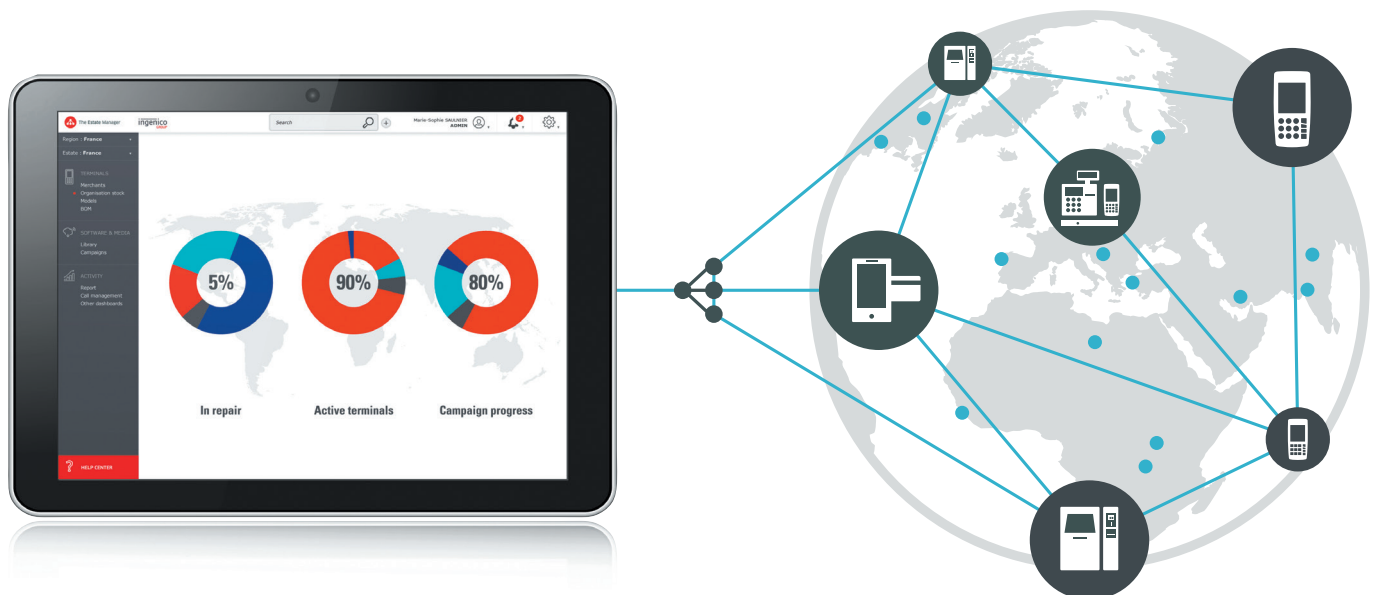
Huge increase in terminal updates

due to regulation changes combined with an anticipation of merchants' needs over the next two years

Maximize the availability of your payment devices in full control of your costs

Facing an increasingly diversified estate, including new acceptance points to address new merchants, new regulations to comply with and new services to develop client intimacy and generate additional revenue streams, estate owners are looking for a robust management system to assure

their estate is always operational to perform transactions. They need to closely monitor their estate configurations and behaviors and provide merchants with a best-in-class service while controlling their overall estate costs.



- **Maximize terminal uptime to perform transactions at merchant locations**
- **Accelerate the time-to-market of your payment solution at the point of sale**
- **Keep your estate at your fingertips to fully control terminal lifecycle and maximize its usage**
- **Control your TCO to optimize business decisions**

Your solution: The new Estate Manager

Ingenico offers a full web-based estate management solution, designed in modules to provide core functionalities or advanced ones, offering the required insights to deeply improve your estate knowledge.

You control your entire estate, across the multiple Ingenico terminal generations (U32, Telium 2, Telium TETRA) and devices supporting international

standards (EPAS-TMS protocol). Frequent interactions with the management server is a pre-requisite for efficiently monitoring terminals, and The Estate Manager offers optimized communication on any type of network (IP, GPRS/3G, PSTN) for quicker and more reliable data exchanges. In addition, you will be able to strengthen your brand image by managing multimedia content

download campaigns easily.

With The Estate Manager, you are in full command of your estate, from the deployment of new software, security solutions or added-value services, to the enhanced management of terminal statuses or the implementation of preventive maintenance mechanisms, reducing failure rates and associated costs.

Welcome to The Estate Manager

ingenico
GROUP

Login

Password

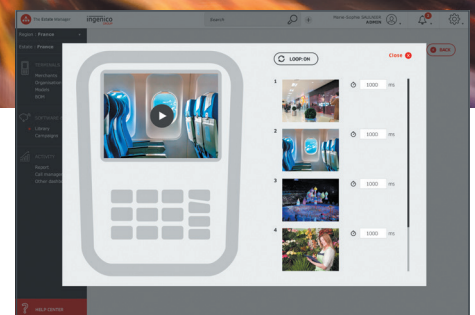
LOGIN

The Estate Manager

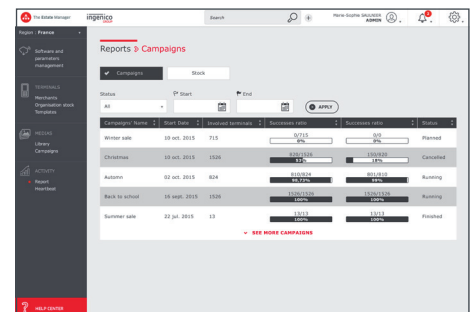
Copyright 2015

New web-based ergonomics for an enhanced user experience

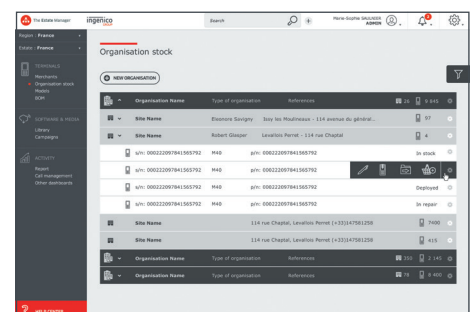
With its new, powerful, web-based portal, The Estate Manager solution features unique and intuitive ergonomics leveraging the best practices of the web UI/UX design. The user experience is greatly enhanced, and learning curve reduced, to increase efficiency and better leverage all of the solution's multiple benefits.



Straightforward multimedia content management through a "terminal emulator", enabling you to preview the rendering prior to activating the campaign



User-friendly campaign reporting dashboard with status on key data, such as the campaign's overall progress and the success of individual calls from terminal to server.



Easy definition and management of merchants' estate and associated terminals. Direct monitoring of changes or extensions of merchants' perimeter from a single interface.

Centralized access to all downloadable files through a user-friendly visual library, enabling you to easily prepare your remote download campaigns.

www.ingenico.com

ingenico
aWorldlinebrand