

# SELF/4000

Compact, engaging and scalable all-in-one payment solution for your self-service indoor and outdoor kiosks

- ▶ Accept all payment methods including magstripe, EMV and NFC/Contactless and QR codes
- ▶ Easily integrate cashless payment in self-service indoor kiosks
- ▶ Offer the best-in-class self-service solution with color screen, camera, sound alerts and additional support for visually impaired people
- ▶ Simplify solution integration, operation and scalability





Part of the Self series, the Self/4000 is an “all-in-one” device that brings secure payment acceptance to vending machines and kiosks.

#### Highest security and easy PIN entry

Fully PCI PTS 5.x certified, the Self/4000 meets the highest and latest hardware and software mandatory requirements. It also complies with SRED and provides flexible options with add-on modules and open APIs. The backlit mechanical keyboard makes the PIN entry easier, especially for the visually impaired.

#### All payment methods

The Self/4000 accepts all payment methods including magstripe, EMV and contactless. In addition, the device facilitates scanning for alternative payment methods based on existing and future QR codes (Alipay or WeChat Pay, etc.).

This card reader has a customizable RGB light input which facilitates user guidance and reinforces the level of security.

#### Simple UI with sound alerts

The solution provides a simple and easy-to-use customer interface with the color display and an embedded mechanical keyboard. By connecting an external speaker, the Self/4000 supports sound alerts and vocal guidance for enhanced usability.

#### Highly ruggedized

Due to its robust design (IK09) and protection against water (IP44) and dust (IPxx), the Self/4000 can be used in any indoor kiosk and any qualified outdoor kiosk.

#### Easy mechanical integration

Thanks to its compact size and design, the Self/4000 can be integrated into a machine from the front or from the rear, depending on the machine design or the installer's choices.

#### Wide connection capabilities

With the addition of MDB (for vending, parking meters and other use cases), Bluetooth, 4G connectivity, the Self/4000 extends its connection capabilities and enables to add optional modules to enhance flexibility.

#### Seamless Ingenico's estate management

The Self/4000 works seamlessly with The Estate Manager solution, allowing integrators & operators to easily use and maintain the fleet of devices without complexity.

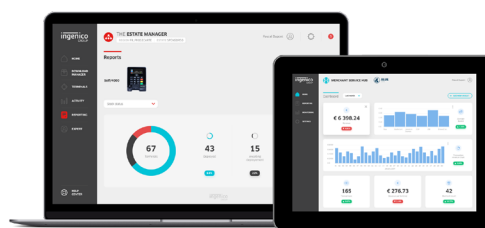
It also allows them to remotely perform software updates and deliver day-to-day support for a hassle-free experience.

#### Future-proof investment

Ingenico's software components for self-service solutions from Telium2 (including the MDB, EXE vending protocols, etc.) is compatible to work with the Self Series and its TETRA platform to facilitate the continuity of current business and scale further.



The Self/4000 is supported by our Cloud Services



<b>Processor / OS</b>	• Cortex A5 - Telium TETRA	•
<b>Memory</b>	• 512 MB Flash, 512 MB RAM • MicroSD up to 32GB	• •
<b>SAM</b>	• 2xSAM ID-000	•
<b>Contactless reader</b>	• EMV Level 1 compliant / ISO 14443 A/B/B'	•
<b>Contact reader</b>	• Hybrid card reader with shutter • RGB LEDs in reader's entry mouth • Smart card - EMV L1 - 500k reads lifespan • MSR ISO 1/2/3 - 500k reads lifespan	• • • •
<b>Display</b>	• 2.27" color IPS - 640 x 240 Wide angle viewing (+/- 180°)	•
<b>Keypad</b>	• Mechanical 16 backlit keys keyboard	•
<b>Audio</b>	• Buzzer Monotone • Wav sound (thru external speaker)	• •
<b>Camera</b>	• 2MP - fixed focal (Honeywell library embedded)	•
<b>Terminal connectivity</b>	• Ethernet 10/100, 1 x RJ45 LAN port • 4G (with fallback 3G/2G) • Bluetooth 4.2	• Option Option
<b>Terminal connections</b>	• 1 x USB Slave • 2 x USB Host • 2 x RS232 • 1 x connector for external loudspeaker • 1 x MDB Master + 1 x MDB Slave	• • • • Option

<b>Security</b>	• PCI PTS 5.1 certified	•
<b>IP</b>	• IP 44	•
<b>IK</b>	• IK 09	•
<b>Power supply</b>	• 9-16 V DC (light sleep mode) • 10-45V DC with optional Add-on box	• Option
<b>Terminal size</b>	• EVA EPS - Standard Door Module • 85 (W) x 107.2 (H) x 109.6 (D) mm (3.3x4.2x4.3")	• •
<b>Weight</b>	• 620 g (22 oz)	•
<b>Environment</b>	• -20°C to +70°C (-4°F to 158°F) - Operating • -20°C to +70°C (-4°F to 158°F) - Storage • 95% non-condensing at +55°C (131°F)	• • •
<b>Mounting in the kiosk</b>	• From outside without EVA plate • From inside with EVA plate	• •
<b>Accessory</b>	• Adapter cable for standard 12V PSU • EVA EPS mounting steel plate • USB cables, serial cables... • PSU 12V DC...	• • Option Option
<b>Add-on boxes</b>	• POWER add-on box (slot#1) • MDB add-on box (slot#2) • 4G + BT add-on box (slot#2)	Option Option Option



www.ingenico.com

**ingenico**  
aWorldlinebrand