

Self/4000

Compact, engaging and scalable all-in-one payment solution for your self-service indoor and outdoor kiosks

- Accept all payment methods including magstripe, EMV and NFC/Contactless and QR codes
- Leverage Ingenico unattended solutions to easily integrate cashless payment in your self-service indoor kiosks
- Improve the customer experience with the best-in-class self-service solution that offers a color screen, camera, sound alerts and additional support for visually impaired customers
- Simplify solution integration, operation and scalability
- Cut complexity in payment security implementation as a result of a full PCI PTS v5 configuration



Part of the new Self series range, the Self/4000 is an “all-in-one” device that equips vending machines and kiosks for secure payment acceptance.

Highest security and easy PIN entry

Fully PCI PTS 5.x compliant, the Self/4000 meets the highest and latest hardware and software mandatory requirements. It also complies with SRED and provides flexible options with add-on modules and open APIs.

The backlit mechanical keyboard makes entering the PIN easier, especially for the visually impaired.

All payment methods

The Self/4000 accepts all payment methods including magstripe, EMV and contactless. In addition, the device facilitates scanning for alternative payment methods based on existing and future QR codes (AliPay or WeChat Pay, etc.).

This card reader has a customizable RGB light input which facilitates user guidance and reinforces the level of security.

Simple UI with sound alerts

The solution provides a simple and easy-to-use customer interface with the color display and an embedded mechanical keyboard. By connecting an external speaker to the Self/4000, the device supports sound alerts for enhanced usability.

Highly ruggedized

Due to its robust design (IK09) and protection against water (IP44) the Self/4000 stands up to the most demanding indoor and qualified outdoor environments and a wide variety of adverse environmental conditions.

Staying connected easily

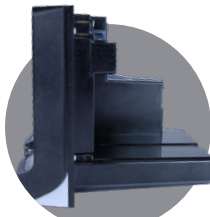
With the addition of multi-drop-bus (MDB) connectors (for vending, parking meters and other use cases), Bluetooth, 4G connectivity, the Self/4000 extends its capabilities and enables you to add optional modules to enhance flexibility.

Compatible with Ingenico's suite of services

The Self/4000 works seamlessly with Ingenico's estate management solution allowing integrators & operators to easily use and maintain the fleet of devices without complexity. It also allows them to remotely perform software updates and deliver day-to-day support for a hassle-free experience.

Protect your investment

Ingenico's software components for self-service solutions from Telium 2 (including the MDB, EXE vending protocols, etc.) is compatible to work with the Self Series and its TETRA platform to facilitate the continuity of current business and scale further.



Processor	Application & Crypto processor	Cortex A5	●
Memory	Internal External	512 MB Flash, 512 MB RAM MicroSD up to 32GB	● ●
OS		Telium TETRA	●
SAM		2 SAM ID-000	●
Card readers	Contactless Smart Card Magstripe Hybrid card reader (horizontal insertion) Shutter	EMV Level 1 compliant / ISO 14443 A/B/B' EMV Leel 1 / 500k reads lifespan ISO 1/2/3, 500k reads lifespan With RGB backlighted LEDs (anti-skimming) To avoid insertion of non card inside the reader	● ● ● ● ●
Display	Colour	2.27" backlit, landscape mode (640x240)	●
Keypad	Mechanical	16 keys, backlit keys	●
Audio	Buzzer Polyphonic sound (wav reader)	Mono Thru external loudspeaker (not provided)	● ●
Camera	In front of the device	2MP - fixed focal (Honeywell library embedded)	●
Terminal connectivity	Wired Wireless	Ethernet 10/100, 1xRJ45 4G Bluetooth	● Option Option
Terminal connections	USB Serial Sound MDB	1 x USB Slave (USB-B connector) 2 x USB Host (USB-A connector) 2 x RS232 (RJ11 connector) 1 x 2 PIN connector for external loudspeaker 1x MDB Master + 1x MDB Slave	● ● ● Option
Power supply	External power supply POWER BOX (in slot #1) MDB BOX (in slot #1)	9-16 V DC - 2 PIN connector 10-45V DC 10-45V DC	● Option Option
Terminal size	EVA standard Overall W x H x D mm	SDM EVA 85 x 107 x 109.6 mm (33.5x42.1x43.1")	● ●
Weight		620 g (22oz)	●
Environment	Operating Temperature Storage Temperature Operating Humidity	-20°C to +70°C (-4°F to 158°F) -20°C to +70°C (-4°F to 158°F) 95% non-condensing at +55°C (131°F)	● ● ●
Material	Plastic	Compliant fire & smoke standard (EN 45 545-2)	●
IP	Ingress protection	IP 44	●
IK	Shock protection	IK 09	●
Accessory		2 PIN to 6 PIN adaptor cable for standard PSU EVA mounting plate USB cables, serial cables PSU	● ● Option Option
Security		PCI PTS 5.1 certified	●



www.ingenico.com

ingenico
GROUP