

iSMP4

The complete payment solution to revolutionize enterprise mobility

- Accept all payment methods including EMV chip & PIN, magstripe, and NFC/contactless
- Connect through a variety of options including Wi-Fi, Bluetooth, and wired with support for integrated and semi-integrated configurations
- Get enterprise-grade reliability with a long-lasting battery and barcode scanner
- Experience the first enterprise mobility solution of its kind with purpose-built accessories and OEM integration options
- Provide the best user experience with a 2.8" backlit color display, the largest in its class, and an illuminated EMV slot



smartcard



magstripe



security



contactless



connectivity



color display



barcode



Designed from the ground up for all-purpose mobile use, the iSMP4 Companion can be connected with a tablet or smartphone to create a secure, smart, mobile point of sale (mPOS) system.

Universal mobility and payment acceptance

The lightweight, 187g, design makes it easy to accept all forms of payment on the go, including EMV chip & PIN, magstripe, and NFC/contactless.

The iSMP4 also supports a wide range of payment use cases and can be used as a companion, integrated, or stand-beside device.

User-friendly and ergonomic design

Designed from the ground up for professional use, the iSMP4 includes a 2.8" backlit color display, the largest in its class, to provide an optimal user experience—even in bright outdoor environments – and an illuminated EMV slot that guides consumer interactions.

The accompanying universal tablet enclosure provides businesses with the flexibility to fit a variety of 8" tablets without restricting merchants to a single device. At a total weight of under 1kg, the enclosure allows associates to carry and use the iSMP4 and tablet in one hand, with a center gripping point and easy access to the iSMP4's barcode scanner and the tablet's camera.

Enterprise-grade performance and security

The iSMP4 handles the most demanding and fast-paced environments. Equipped with an optional 1D/2D commercialgrade barcode scanner with laser-aiming technology, it reliably scans loyalty cards, coupons, barcodes, QR codes, and even driver's licenses.

Its long-lasting 2000mAh battery adds further durability with support for a full workday, plus it can be easily swapped-out for rapid replacement.

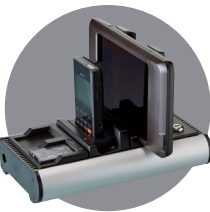
The accompanying multi-bay docking station enable simultaneous data communication and charging of the iSMP4 and a tablet, while providing an advanced locking system to secure all components with a tamper resistant mounting.

Wide range of connectivity and integration options

Built upon the same platform as Ingenico Group's full featured payment devices, the iSMP4 provides a single integration across all of your payment initiatives.

Pair it with virtually any iOS, Android, Windows, or Linux-based device to convert it into a point of sale, and connect via Bluetooth, Wi-Fi, and physical pairing to enable integrated and semi-integrated options.

In addition, its modular design and 10-pin connector deliver robust physical connectivity for power and data communication, enabling integration with third-party mobile devices, cases, stands, and docks.



FEATURE	Description
Main processor	RISC 32-bits ARM9 processor - 380 MHz 450 MIPS
Crypto processor	RISC 32-bits ARM7 processor - 57 MHz 50 MIPS
Memory	SDRAM: 32 Mb, Flash: 128 Mb
OS	Telium 2
Mobile OS	iOS: 4.x and above. Windows: Win7, Win8 (x86, x64). Android: 2.3.3 and above. Linux
Card readers	SCR: Standard (ISO7816, EMV L1 certified) - 300k lifespan MSR: Standard (ISO 7810, 7811 and 7813, T 1/2/3) - 300k lifespan Contactless reader: Standard (ISO 14443 A&B, NFC)
Display	Color QVGA, backlit, 320x240, 2.81 in. (71mm)
Keypad	16 keys and 4 functions keys, 2 barcode buttons, physical, tactile ADA compliant, backlit
Contactless	LED Yes - green or multicolor for Visa payWave support
Connectivity	Wireless: Bluetooth Class II with 128-bit encryption, Wi-Fi Wired: USB-C, 10 pin PDA-style connector
Barcode reader	1D/2D all major standards supported, laser aiming feature (Factory option)
Battery	Field removable Li-ion 2000 mAh
Dimensions	133 x 72 x 19 mm (5.2" x 2.8" x .75")
Weight	187 g (6.6 oz)
Environment	Operating temperature: -10°C to +45°C (non charging) / 0°C to 40°C Storage temperature: -20°C to +55°C Operating humidity: 85% RH at +40°C
Accessories (options)	Tablet enclosure for iPad mini 4 Multi-bay docking stations for iSMP4 Multi-bay docking stations for tablet enclosure Other accessories & integrations developed with partners
Security	PCI PTS 4.x, supports multiple P2PE schemes



www.ingenico.com

ingenico
GROUP