

iUC280

All-in-one contact & contactless module for Vending self-service business

- Accept all payment methods with a single module integrating three readers (NFC/contactless, Chip without PIN, magstripe)
- Integrate easily cashless solution into all vending machines with a full outside mounting
- Combine the iUC280 with the iUI120 for a complete solution
- Choose the iUC285 standalone solution for your advanced vending machine requirements



security



smartcard



magstripe



contactless



rugged



color backlit

Part of the iSelf series, the iUC280 enables the simple and secure integration of contact and contactless payment into the Vending business.

Highest Security Levels

PCI PTS 4.x ready, the iUC280 meets the highest and latest hardware and software mandatory requirements. The iUC280 also complies with SRED and provides flexible options with Open Protocol modules.

All payment options, including Contactless/NFC

The iUC280 accepts all contactless/NFC payments and new use cases such as e-Wallets and ticketing. The device is MasterCard PayPass™ and Visa PayWave™ ready and supports all EMV contactless cards. It also enables EMV Chip & Magstripe transactions with no PIN entry, whilst respecting international regulations.

User-friendly design

The iUC280 embeds all payment methods in a single and friendly interface. Thanks to its sleek & compact design, transactions are simpler, faster and secure. Its high-contrast graphic display and touch keys provide users with clear guidance, thus improving interactivity.

Highly Ruggedized

Thanks to its robust design, the iSelf series stands up to the most demanding outdoor environments and a wide variety of adverse environmental conditions. The iUC280 device is proofed against vandalism (IK10) and extreme weather.

* Cardholder Verification Method
 ** European Vending Association

Telium 2 Technology

Powered by Ingenico, Telium 2 Technology is the result of 30 year's experience in the payment industry. Secure, highly integrated and fast, Telium is the world's best platform to provide payment services. It provides a fully scalable reliable operating system embedded into the 22 million terminals deployed worldwide.

Easy Integration

Our compact and modular iSelf series devices are embedded in their enclosure and integrated according to the EVA** market standard. Maintenance requires no additional equipment and our devices are updated using the iUI120.

Flexible Communication and Connectivity

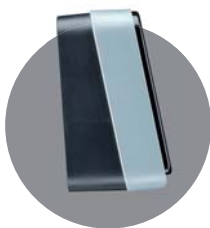
The iUC280 must be connected via USB or RS232 to the iUI120, which provides a full set of connectivity and connections (including USB, RS232, MDB, Ethernet, GPRS and Bluetooth). Covering most kiosk system requirements, it can communicate with kiosks, acquirers, hosts or service providers (telemetry).

iUC285: the standalone version designed for advanced vending machines

As a standalone version, the iUC285 offers the same features as the iUC280. Once connected to a PC motherboard, it benefits from all connections and connectivity provided by the PC.

Eco-friendly

Stand-by mode guarantees optimal energy efficiency. Ingenico is committed to safeguarding the environment. Our manufacturing facilities are ISO 14001 certified.



iSelf Series		iUC280
Processor	Type	RISC 32-bits ARM9
	Speed	RISC 32-bits ARM7 450 MIPS + 50 MIPS
Memory	RAM/Flash	16MB/128MB
Removable memory	µSD Card	1
SAM		2
Card readers	Smart card	●
	Magstripe	●
	Contactless	ISO 14443 A/B
Display	Graphic 128 x 64 pixels	●
	Backlit RGB	●
	Black & white	●
Keyboard	Capacitive keys	2
Buzzer		●
Connections	RS232	1
	USB Slave	1
Power supply	External power supply	5V by USB slave
	Stand by mode	●
Size	Overall W x H x D mm	85 x 110 x 60
	Cut area W x H mm	107 x 85
Weight		270g
Customization		Layout sheet (in factory only)
Environment	Operating temperature	-20°C to +65°C
	Storage temperature	-20°C to +65°C
	Relative humidity, non condensing	90% HR at +55°C
	IP Ingress protection	IP54
IK	Shock protection	IK10
PCI PTS	4.x	Ready
Configuration type		Managed by iUI120



www.ingenico.com

ingenico
 Smart terminals