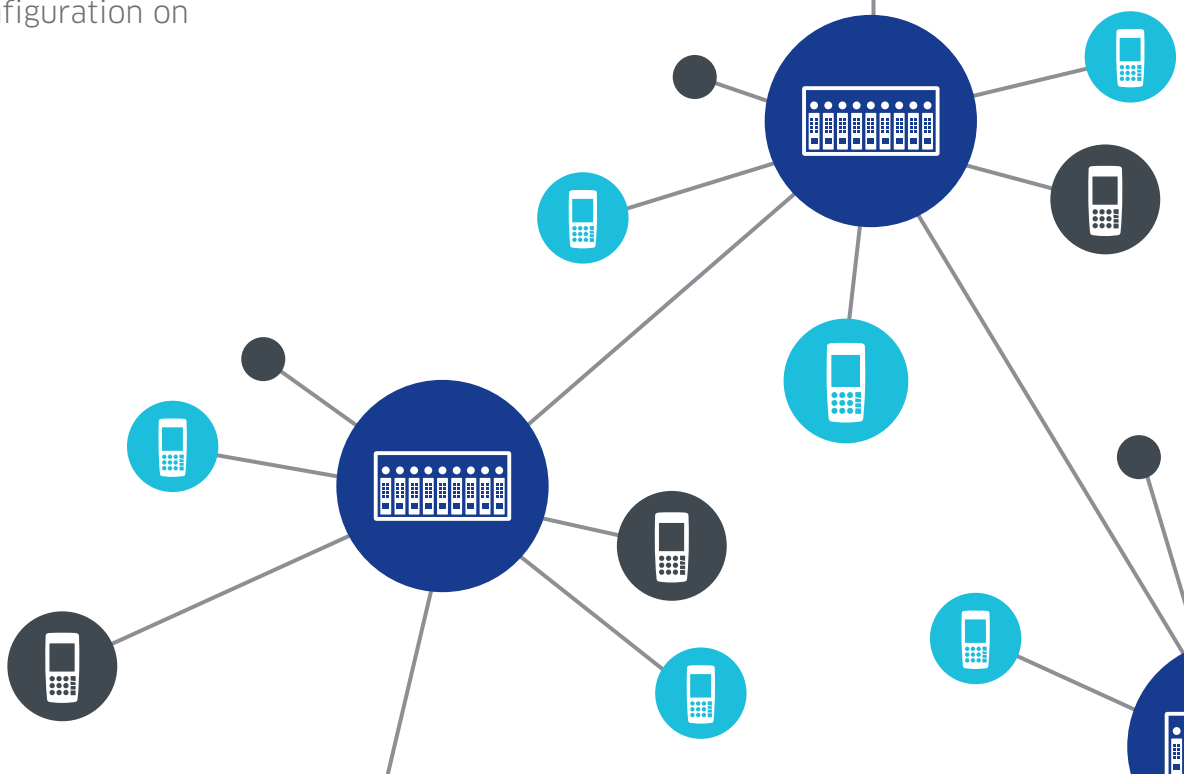
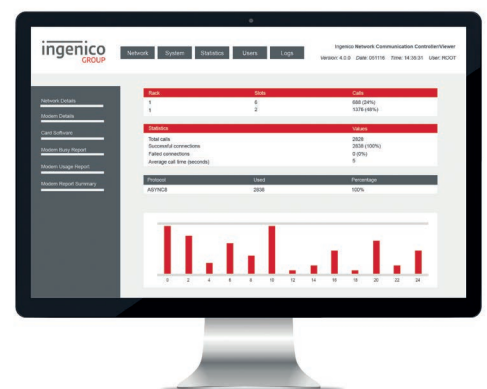


NCC/Viewer

Unlock the potential of your network communication controllers

- Maximize network uptime thanks to real-time traffic monitoring
- Leverage your infrastructure thanks to a flexible user interface running on any web browser
- Keep your network at your fingertips to modify your controllers configuration on demand



The NCC/Viewer is the most powerful tool to monitor in real time your network communication controllers and remotely manage their settings.

Flexible, intuitive, efficient

NCC/Viewer is a web based application running on Linux CentOS distribution. It has been designed to be supported by all the standard web browsers such as Microsoft Internet Explorer, Mozilla FireFox or Google Chrome. The user interface allows a real time displaying of your network map, including the state of each blade and indications of failure location if any. Coupled with a configurable alerts engine (emailing, pop-up), it brings to you an efficient tool to maximize transactions flow.

Advanced Remote Manager

NCC/Viewer is dedicated to remote management through its comprehensive configuration menus, allowing to edit variables, to configure new NCC in the chain but also to download and manage software and firewall on each board independently. A last proof of efficiency, NCC/Viewer is the solution to open your PSTN fleet to The Estate Manager.

From statistics to pro-activity

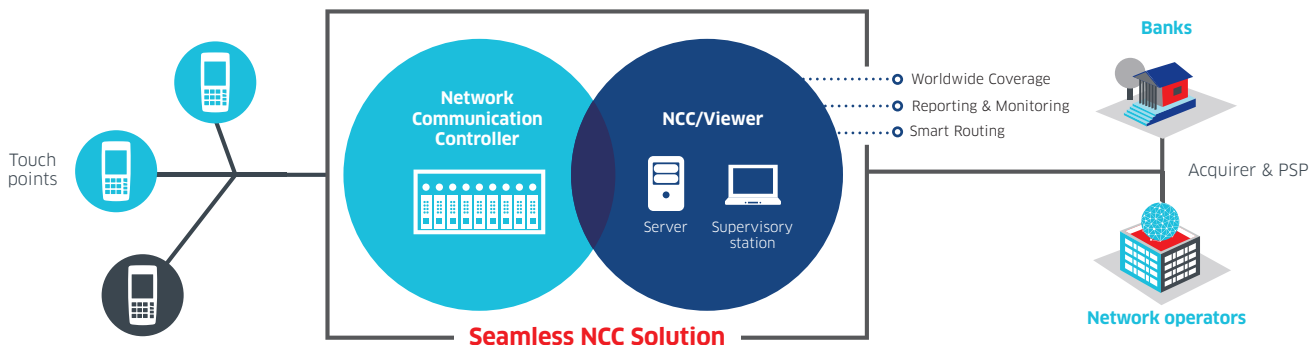
That is the heart of the solution: a powerful data, logs and statistics aggregator which automatically generates reports and graphics from the entire network on a daily, weekly, monthly basis. Statistics reported allows a deep analysis of transactions: protocols & speed used, duration, sender and recipient, failure rate, peak hours. This capability is providing banks and acquirers a great diagnostic solution to proactively adapt their network and POS installed base to perform more transactions.

Security as a prerequisite to business

NCC/series with its last generation NCC/2 have been designed with the latest standard of communication in order to help customer to reach the PCI DSS guidelines. No storage of cardholder data is performed. Encryption is supported and encrypted VPN is used between NCC and Servers or between NCCs (Details on security available on demand). NCC/Viewer offers a comprehensive user segmentation from "Master" level to "View only" level with different access secured with password and stores the history of each user's actions.

Terminal agnostic, NCC agnostic

Ingenico NCC provides acquirers & banks with an agnostic solution to route all types of transactions (including IP and E1/T1 but PSTN too) coming from all types of terminals including those of our competitors NCC/Viewer has been designed to be used indifferently with NCC or NCC-2, it is a real converging solution.



Hardware prerequisites	Software prerequisites
<ul style="list-style-type: none"> • CPU: Dual Core @ 2GHz • Memory: 8GB RAM • 1 Gb wired Ethernet port • Disk: 250GB (to store statistics, alarms and Logs) <p>Placed in a virtual environment, the same requirements apply.</p>	<p>NCC/Viewer is a Java-based system that installs and runs on Intel 64-bit servers running Redhat Enterprise Linux 6.x and up or CentOS 6.x and up. It runs on all the mainstream browsers such as:</p> <ul style="list-style-type: none"> • Microsoft Internet Explorer 9+ • Mozilla FireFox • Google Chrome <p>NCC/Viewer needs a database to store all information such as the configuration, statistics and logs. The two recommended databases are:</p> <ul style="list-style-type: none"> • PostgreSQL (9.1 as a minimum, 9.4.4 as a preferred) • MySQL (5.6 as a minimum, 5.6.15 as a preferred)



www.ingenico.com

ingenico
Smart terminals