

# Open/1500

## Stealthy, powerful and scalable contactless module to fit any transport projects

- Designed for open payment by meeting transport & payment needs
- Integrated easily & sleekly in plastic embedded validator (bus, tramway, train, ferries...)
- Complies with transport & payment standards thanks to a dedicated compliant contactless reader
- Enable the latest contactless payments and new use cases such as contactless tickets, mobiles or IoT and manage closed-loop cards (Mifare®, Desfire®...)



contactless



security



rugged



bluetooth



ethernet



TELIUM  
TETRA

Part of new generation of unattended devices, the Open/1500 offers the best of transport and payment worlds to meet all your open payment requirements.

**Highest security**

PCI PTS 5.1 certified, the Open/1500 is natively designed to meet local regulations and ensure long-term compliance.

**Contactless, NFC Payment**

The Open/1500 enables all contactless payments methods: Visa, Mastercard, Amex, Discover, CUP, Interact, Flash, ApplePay, GooglePay... and many more!

**All ticketing media and applications**

The Open/1500 is able to manage all digital tickets: closed-loop cards (Mifare®, Desfire®...), NFC devices, contactless tickets, QR codes (through external optional camera), mobile apps (through Bluetooth)... Thanks to Paragon ID's expertise, provided as part of the fruitful partnership with Ingenico, the open payment terminals are able to handle all kinds of future ticketing media and new transport applications.

**Compliant with transport standards**

The Open/1500 is compliant with standards for use in fixed or mobile equipment (road vehicles and railways).

**Easy mechanical integration in embedded validators**

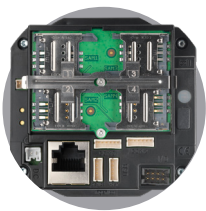
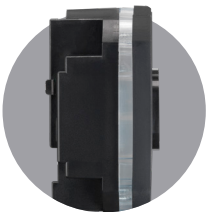
Thanks to its sleek design, the Open/1500 fits in a plastic validator which will be embedded in a bus, a tramway, a train or a ferry. Only the backlit RVB and RVB LEDs are visible.

**Powerful, with multiple connections**

Based on the most powerful processor of Telium TETRA range with a large amount of memory, the Open/1500 has many interfaces to fit all open payment usage cases.

**Highly ruggedized and durable**

Thanks to its robust design (IK10) and high protection against water (IP65) the Open/1500 stands up to the most demanding indoor and outdoor environments. Thanks to the additional removable battery, the battery lifetime is extended to the device lifetime.



NAME		Open/1500
<b>Processor</b>	Application processor	Cortex A5
<b>Memory</b>	Internal External	512 MB Flash, 512 MB RAM MicroSD up to 32GB
<b>OS</b>		Telium TETRA
<b>SAM</b>		4 SAM ID-000 ISO 7816 (High Speed protocol) Studied for vibration resistance Accessible without dismounting the reader
<b>Card reader</b>	Contactless NFC	EMV Level 1 compliant / ISO 14443 A/B/B' ISO 18 092 (card / reader / peer-to-peer modes)
<b>Battery</b>		Standard battery + additional removable battery
<b>User interface</b>	Contactless landing zone LEDs indicator	RVB backlit landing zone 4 RVB LEDs
<b>Maintenance interface</b>		Maintenance button and LED
<b>Audio</b>	Buzzer Polyphonic sound (wav reader)	Mono Through external loudspeaker (not provided)
<b>Terminal connections</b>	USB Serial I/O Sound	1 x USB Slave (JST connector) 1 x USB Host (JST connector) 2 x RS232 (JST connector) 2 x inputs and 2 x outputs (isolated) 1 x 2-pin connector for external loudspeaker
<b>Terminal connectivity</b>	Ethernet 10/100 Bluetooth	1 x RJ 45 (PoE supported) BT 4.1 module (beacon mode)
<b>Power supply</b>	External power supply	10W: 5V DC to 48V DC. Current : 2000 mA at 5V POE supported For automotive, range is : 12V DC to 24V DC Wake up mode
<b>Accessories</b>	Frame Optional	Plastic piece for rounding the landing zone JST to USB-A cables (0.3m, 1.15m, 2m) JST to DB9 serial cable (1m) 6-pin to 2-pin connector adapter (PSU)
<b>Terminal size</b>	Overall: W x H x D mm	75.5 x 72 x 37 mm (2.9x2.8x1.5")
<b>Weight</b>		134g (4.7oz)
<b>Environment</b>	Operating temperature Storage temperature Operating humidity EMC standards	-20°C to +70°C (-4°F to 158°F) -20°C to +70°C (-4°F to 158°F) 95% non-condensing at +55°C (131°F) For fixed & mobile (road, railways) equipment
<b>Material</b>	Plastic	Compliant with fire & smoke standard (EN 45545-2 V0)
<b>IP</b>	Ingress protection	IP 65
<b>IK</b>	Shock protection	IK 10
<b>Security</b>		Certified PCI PTS 5.1 online & offline

CORP-BR-Open/1500-EN-JAN2019. All rights reserved. This document is not binding and the specifications above can be modified without prior consent. ©2019



www.ingenico.com