



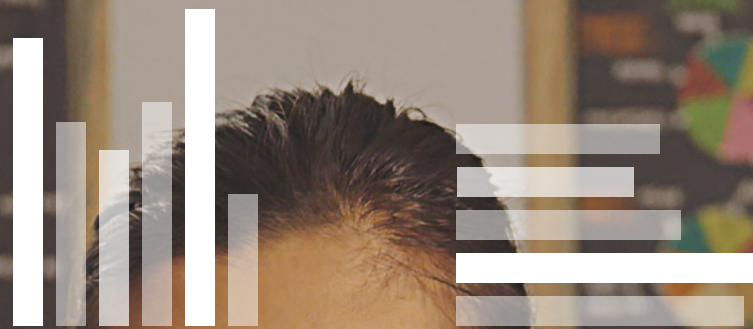
The Integrated POS

Turn existing payment services into business centric solution

With the integrated POS, Ingenico is providing a universal platform to easily deploy a complete point-of-sale solution. Specifically designed for tablets, it is the perfect solution to leverage your existing payment assets while answering the needs of connected small merchants.



October stats



Returning customers



Summary



Leverage your terminal fleet with an out-of-the-box POS solution



Your benefits:

- **Upgrade your terminal fleet** to build a full cash register system
- **Open to a rich VAS ecosystem**
- **Fully integrated & flexible** to offer an all-in-one compact solution, with smallest footprint on countertop.
- **Deploy easily** due to a seamless combination of POS software and payment thanks to REST API.

A modular solution addressing all use cases



Platform		ARM Cortex A8	•
Memory		RAM 256Mo Flash 256Mb	• •
Terminal supported	Without terminal holder With terminal holder	All Ingenico terminals compatible iCT & Desk/series compatible	• Option
Merchant display	Tablet supported	10.5 pouces ± 10% Apple, Windows & Android	•
Customer display	2 possibilities	Color QVGA 2.7" Color QVGA 7"	Option Option
Barcode reader		1D/2D	Option
Printer	Auto cut Paper roll Paper diameter Speed	3" 80 mm width x Ø 80 mm 150 mm/second, 144 dots	• • • •
Stand with connectivity		RJ12 for cash drawer 3 USB port 3 Ethernet port	• • •
Bluetooth connectivity		Bluetooth 4.2	•
Wi-Fi connectivity		2.4GHz/5Ghz, 802.11a/b/g/n	•
Dimension	Core module	259 x 263 x 269 (10.2x10.4x10.6")	•
	+2D scanner	259 x 263 x 269 (10.2x10.4x10.6")	•
	+ terminal holder	395 x 263 x 269 (15.6x10.4x10.6")	•