

Lane/5000

Create new retail checkout experiences with a world of Business Apps

- ◉ Enhance the purchasing experience by combining a large touchscreen display within a compact consumer-facing terminal
- ◉ Accelerate checkout offering electronic signature and boosting NFC acceptance
- ◉ Leverage a terminal designed for the most demanding retail environments



The most advanced designed-for-retail terminal, Lane/5000 combines payment acceptance and new services to reinforce consumer engagement.

Highest security

The Lane/5000 is PCI-PTS 5.x certified. Its Telium TETRA OS uses the latest cryptographic schemes with future-proof key length. Additional anti-theft systems, such as Kensington locks, strengthen security.

All payment options

The Lane/5000 enables NFC couponing and wallet use cases, in addition to EMV Chip & PIN, Swipe & Sign and contactless.

User-friendly and intuitive interface

Featuring enriched multimedia capabilities and a 3.5" color touch screen, Lane/5000 enhances interactivity with consumer during payment and business Apps operations.

Designed for retailers

Conceived for intensive retail usage, the Lane/5000 features a durable signature - capacitive screen, heavy duty magnetic stripe and smartcard readers optimized for transaction speed, and a multipoint connector for easy integration.



Built-in data capture capabilities

With its camera, Lane/5000 enables alternative payment schemes and unlimited possibilities for business Apps.

Seamless NFC payment experience

The Lane/5000 makes NFC acceptance easy.

Its dedicated and visible reader zone is enhanced with smooth backlit glass. This ergonomic reader offers consumers a seamless experience while improving retailer efficiency.

Electronic signature

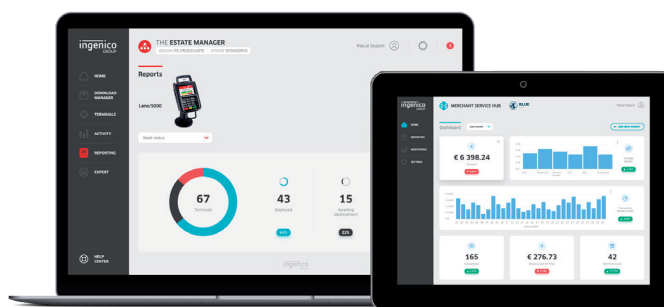
The Lane/5000 features durable signature capture capabilities for electronic payments, receipt storage and new business applications such as contracts, warranty programs and enrollment.

Compatible with Ingenico's suite of services

Keeping the solutions connected, the Lane/5000 works in unison with Ingenico's supporting service platforms, meaning merchants will have access to business services such as back office reporting and e-receipt management. Software updates and day-to-day support deliver a hassle-free experience.



Lane/5000 is supported by our Cloud Services



Processor	• Crypto & Crypto Processor	• Cortex A5	•
Memory	• Internal • External	• 256 MB Flash, 128 MB RAM • Micro SD up to 32 GB	• Option
OS		• Telium TETRA	•
SAM		• 3	• Option
Card Reader(s)	• Magstripe • Smart Card • Contactless	• ISO 1/2/3, 500K lifespan • Dual Head • EMV Level 1, 500K lifespan • EMV Level 1 compliant, Felica	• Option • •
Display	• Colour	• 3.5" backlight, QVGA (320x240 pixels)	•
Touchscreen	• Resistive • Capacitive	• Finger & stylus (300K lifespan signature) • Finger & stylus (1000K lifespan signature)	• • Option
Keypad		• 15 keys, raised markings, backlit	•
Audio	• Buzzer • Audio Jack • Speaker	• Stereo • Mono	• Option • Option
Video	Video accelerator	H264 codec	•
Data Capture	Camera	5M pixels autofocus	• Option

Terminal Connectivity	• Wired • Wireless	• Ethernet 10/100 base T • Bluetooth Class 2 • Wi-Fi	• •
Terminal Connections	USB Serial	• USB Host • 2nd USB Host • USB Slave • 1 RS232	• Option • •
Power supply	• Powered USB • Powered RS232 • Powered Ethernet • External power supply	• 12V (USB retail) • 12V • PoE 802.3af compliant	• • • Option • Option
Stand Mounting		• Universal Payment Mount	• Option
Terminal size		• 189x111x48 mm (7.4x4.3x1.9")	•
Weight		• 350 g (12.3 oz)	•
Environment	• Operating temperature • Storage temperature • Relative humidity	• 0 to +50°C (32°F to 122°F) • -20 to +70°C (-4°F to 131°F) • 85% HR at +40°C (104°F)	• • •
Accessories	• Privacy shield • Stylus kit	• PCI compliant • EPC+ compliant*	• • Option • Option
Security		• PCI PTS 5.x & 4.x online & offline certified	•

* This locally compliant pinshield is not PCI certified, it is used where local regulations overruled PCI



www.ingenico.com

ingenico
aWorldlinebrand