

# Move/2500 B

Combine EMV/PCI security with  
the convenience of fingerprint biometrics

- Accept all payment and authentication methods in-store
- Deliver financial inclusion services to targeted population
- Pave the way for payment schemes relying on national ID programs
- Keep control of customer verification while reaching the unbanked population



With the Move/2500 B, banks can build affordable enrolment & acquisition networks implementing fingerprint biometrics for any financial transactions.

### Maximum security

The Move/2500 B is PCI-PTS 5.x certified. Its Telium TETRA OS uses the latest cryptographic schemes with future-proof key length. For match-on-server verifications, any biometric template is encrypted using Ingenico E2EE.

### All payment options

The Move/2500 B enables biometric payment in addition to NFC applications, EMV Chip & PIN, swipe and contactless.

### Designed for Mobility

Designed for both indoor and outdoor use, the wireless Move/2500 B is the perfect business companion for merchants. It goes the last mile to bring financial transactions to the unbanked.

### Guaranteed terminal availability

In a single terminal, the hybrid Move/2500 B comes with wired (Ethernet, PSTN) or wireless (3G & GPRS, with Dual SIM) communication capabilities. It then guarantees terminal payment acceptance availability in the event of network failures.

### Biometric payment under banks' & acquirers' control

Under EMVCo's latest applicable specifications, fingerprint biometrics is obtaining the status of Cardholder Verification Method. A strong differentiator for banks with a customer acquisition strategy.

### Telium TETRA OS: Secure in payment

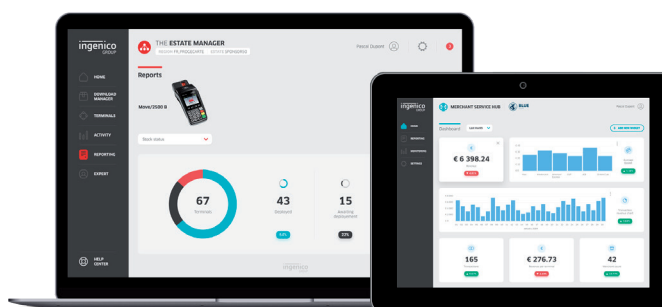
Backed by 40 years of experience and with its user-friendly interface, the Telium TETRA operating system incorporates the best security mechanisms to protect transaction secrets and leverage the unique portfolio of Ingenico payment applications.

### Leading fingerprint technology

Incorporating the best-in-class fingerprint module, the Move/2500 B matches prints in a split second. CBM-E3 from Idemia complies with FBI standards, with PIV-IQS certification and process FIPS 201 approved algorithms. It is IP65-tested and ensures long-lasting features and outdoor readiness.



The Move/2500 B is supported by our Cloud Services



			MOVE/ 2500 B HYBRID	MOVE/ 2500 B PORT.
<b>Processor</b>	• Application & Crypto processor	• Cortex A5	•	•
<b>Memory</b>		• 256 MB Flash, 128 MB RAM • 512 MB Flash, 128 MB RAM	• Option	• Option
<b>OS</b>		• Telium TETRA	•	•
<b>SIM</b>		• 2 SIM	Option	Option
<b>SAM</b>		• 2 SAM • 3rd SAM	• Option	• Option
<b>Card readers</b>	• Magstripe • Smart card  • NFC/Contactless	• ISO 1/2/3, 500K lifespan • EMV Level 1, 500K lifespan • EMV Level 1 compliant	• • •	• • •
<b>Biometric fingerprint</b>		• Idemia CBM-E3	•	•
<b>Display</b>	• Colour	• 2.4" backlit, QVGA (320x240 pixels)	•	•
<b>Keypad</b>		• 16 keys, raised marking, backlit • 4 Functional Keys without backlight	• •	• •
<b>Audio</b>	• Buzzer		•	•

			MOVE/ 2500 B HYBRID	MOVE/ 2500 B PORT.
<b>Thermal Printer</b>	• Speed in lines/s • Paper roll cage	• up to 24 lines/s • 58 mm width x Ø 40 mm	• •	• •
<b>Terminal connectivity</b>	• WAN • Wired	• 3G and GPRS • Dial-up Modem RJ45 • Ethernet 10/100 base T RJ45	Option • •	• N/A N/A
<b>Terminal connections</b>	• USB • Serial • Power Supply	• Micro USB Host & Slave • RS 232 RJ11 • Dedicated power Jack	• • •	• N/A •
<b>Battery</b>	• Li-Ion	• 2200mAh	•	•
<b>Terminal size</b>	• Portable or Hybrid	• 215x81x69 mm (8.46x3.2x2.7")	•	•
<b>Weight</b>	• Terminal + Battery	• 378 g (13.3 oz)	•	•
<b>Environment</b>	• Operating Temperature • Storage Temperature • Operating Humidity	• -10°C to +40°C (14°F to 104°F) • -20°C to +55°C (-4°F to 131°F) • 85% non-condensing at +40°C (104°F)	• • •	• • •
<b>Security</b>		• PCI PTS 5.x online & offline certified	•	•



www.ingenico.com

**ingenico**  
aWorldlinebrand