

Link/2500

Smart, sleek, simple.

Payment excellence at its finest.



- Specifically engineered for flexibility to accept all payment methods including NFC/Contactless, Apple Pay and Samsung Pay
- Optimize your payment solution for any existing infrastructure thanks to a fully versatile connectivity options
- Payment acceptance in your pocket!
The ideal payment terminal for busy mobile merchants



With the Link/2500, Ingenico brings payment acceptance solution to any mobile business.

Highest security

The Link/2500 is PCI-PTS 5.x certified. Its Telium Tetra OS uses the latest cryptographic schemes with future-proof key length.

All payment options

In addition to EMV Chip & PIN, swipe and sign, Link/2500 supports the broadest range of contactless standards allowing NFC couponing and wallet use cases.

Maximized network availability

In one single terminal, Link/2500 proposes a full spectrum wireless connectivity (3G, fallback GPRS, Dual SIM, Bluetooth and WiFi), offering flexibility to mobile merchant, while optimizing communication costs.

Designed for accessibility

Thanks to an integrated speaker which could provide vocal assistance and a real mechanical keypad with raised marking, Link/2500 is built for the most demanding use.

Designed for mobility

Featuring a pocket-sized, light weight and robust design the Link/2500 is the perfect business acceptance point for mobile merchants.

User-friendly and intuitive interface

Featuring an edge design, Link/2500 is user oriented featuring thanks to a bright 2.4" color display touchscreen capability and a USB-C connector which can be plugged upside down.

Secure Telium TETRA OS

Backed by 40 years of experience and with its user-friendly interface, the Telium TETRA operating system includes the best security mechanisms embedded to protect transaction privacy and leverages Ingenico's unique portfolio of payment applications

Compatible with Ingenico's suite of services

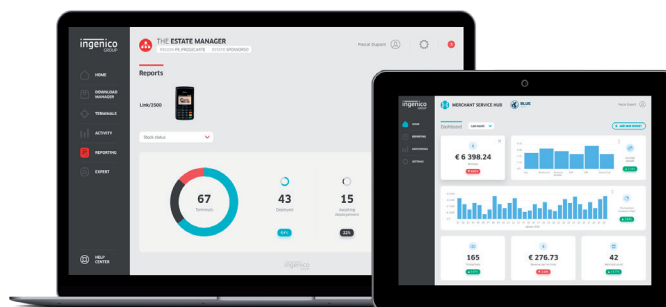
Keeping the solutions connected, the Link/2500 works in unison with Ingenico's supporting service platforms, meaning merchants will have access to business services such as back office reporting and e-receipt management. Software updates and day-to-day support deliver a hassle-free experience.



**TELIUM
TETRA**



The Link/2500 is supported by our Cloud Services



			LINK/ 2500	LINK/ 2500 TOUCH
Processor	• Application & Crypto processor	• Cortex A5	●	●
Memory	• Internal	• 256 MB Flash, 128 MB RAM • 128 MB Flash, 128 MB RAM	● Option	● Option
OS		• Telium TETRA	●	●
SIM / SAM		• Up to 2	Option	
Card readers	• Magstripe • Smart card • Contactless	• ISO 1/2/3, 500K lifespan • EMV Level 1, 50K lifespan • EMV / ISO14443	● ● Option	● ● Option
Display	• Colour	• 2.4" colour display, backlit, QVGA (240x320 pixels)	●	●
Keypad	• Mechanical	• 20 keys, raised marking • Backlight keypad	● N/A	● Option
Audio	• Buzzer • Speaker		● Option	● Option

			LINK/ 2500	LINK/ 2500 TOUCH
Terminal connectivity	• WAN • LAN • Apple IAP Chip • Multicom	• 3G (Fallback GPRS); Dual SIM • Bluetooth • WiFi (Dual band) • All connectivities in one single device	Option Option Option Option	Option Option Option Option
Terminal connections	• USB Type C	• Host & Slave	●	●
Terminal size	• L x W x H	• 129 x 70 x 17 mm (5.07 x 2.75 x 0.67) • 129 x 70 x 18 mm (5.07 x 2.75 x 0.70)	● N/A	N/A ●
Power supply	• Terminal	• 5V 1A	Option	Option
Battery	• Li-ion	• 1200mAh (removable)	●	●
Weight	• Full featured	• 155 g (5.46 oz) • 167 g (5.89 oz)	● N/A	N/A ●
Environment	• Charging Temperature • Operating Temperature • Storage Temperature • Operating Humidity	• 0°C to +40°C (32°F to 104°F) • -10°C to +50°C (-14°F to 122°F) • -20°C to +55°C (-4°F to 131°F) • 85% non-condensing at +40°C (104°F)	● ● ● ●	● ● ● ●
Accessory	• Cable	• USB A to USB C: 1.5m	●	●
Security		• PCI PTS 4.x & v5.x online & offline certified	●	●



www.ingenico.com

ingenico
aWorldlinebrand