

# Link/2500i

Clever payment companion  
designed with integration in mind

- Specifically engineered for flexibility to accept all payment methods including NFC/Contactless, Apple Pay and Google Pay
- Reduce time to market by leveraging Telium applications into a smart companion
- Designed to facilitate the integration with Ingenico's iCON Case and other third party devices



When paired with an iOS/Windows tablet or a smartphone, Link/2500i (Integration) brings payment acceptance to any mobile point of sales.

### Highest security

Link/2500i is PCI-PTS 5.x certified. Its Telium TETRA OS uses the latest cryptographic schemes with future-proof key length.

### All payment options

In addition to EMV Chip & PIN and swipe, Link/2500i supports the broadest range of contactless standards allowing NFC couponing and wallet use cases.

### Designed for integration

The Link/2500i is the ideal product to integrate payment into Ingenico's iCON Case and other third-party devices. It is lightweight, features a slim design, as well as mechanical and electronic integration to charge and communicate with a third party device.

### Seamless integration

Link/2500i facilitates the in-store integration due to its agnosticity. The Link/2500i can be paired with any iOS, Android or Windows-based tablet or smartphone to convert it into a point of sale.



### User-friendly and intuitive interface

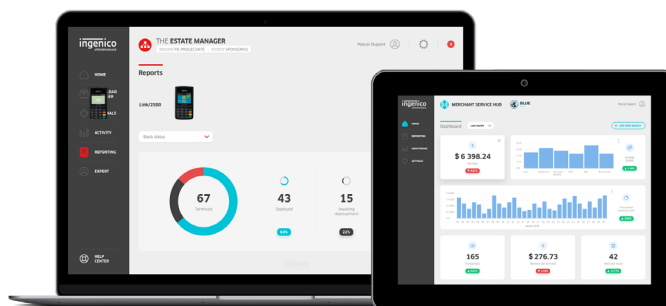
Featuring a cutting edge design, the Link/2500i is user oriented with its bright 2.4" color display and a mechanical keypad.

### Compatible with Ingenico's suite of services

Keeping the solutions connected, the Link/2500i works in unison with Ingenico's supporting service platforms, meaning merchants will have access to business services such as estate management reporting. Software updates and day-to-day support deliver a hassle-free experience.



The Link/2500 Integration is supported by our Cloud Services



<b>Processor</b>	• Application & Crypto processor	• Cortex A5	•
<b>Memory</b>	• Internal	• 256 MB Flash, 128 MB RAM	•
<b>OS</b>		• Telium TETRA	•
<b>Card Readers</b>	• Magstripe	• ISO 1/2/3, 100K lifespan	•
	• Smart card	• EMV Level 1, 50K lifespan	•
	• Contactless	• EMV / ISO14443	•
<b>Display</b>	• Color	• 2.4" colour display, backlit, QVGA (240x320 pixels)	•
<b>Keypad</b>	• Mechanical	• 20 keys, raised marking	•
<b>Audio</b>	• Buzzer	• Up to 50dB, adjustable	•

<b>Terminal Connectivity</b>	• Bluetooth	• Bluetooth 4.2 Class B	•
	• USB	• Back connector for charging & USB data exchange	•
	• Apple IAP Chip	• Certified MFI in BT & USB	•
<b>Battery</b>	• Li-ion	• 600mAh	•
<b>Terminal Size</b>	• L x W x H	• 5.07x2.75x0.51" (129x70x13 mm)	•
<b>Weight</b>	• Full featured	• 5.46oz (120g)	•
<b>Environment</b>	• Charging Temperature	• 32°F to 104°F (0°C to +40°C)	•
	• Operating Temperature	• 14°F to 122°F (-10°C to +50°C)	•
	• Storage Temperature	• -4°F to 131°F (-20°C to +55°C)	•
	• Operating Humidity	• 85% non-condensing at 104°F (+40°C)	•
<b>Accessories</b>	• iCON Case		• <b>USB &amp; Bluetooth Connection</b>
<b>Security</b>		• PCI PTS 5.x online & offline certified	•



www.ingenico.us

**ingenico**  
aWorldline brand