

# Open/1500

**Stealthy and powerful contactless module to fit any self-service solution in transportation, retail and hospitality.**

- Designed for open payments by supporting transit and bank cards
- Integrates easily into plastic validator enclosures (bus, train, ferries, etc.) or kiosk mounts
- PCI-Certified dedicated contactless reader enables new use cases such as contactless ticketing, mobile and IOT payments and manages closed loop cards (Mifare, Desfire, etc.)
- Also suitable for enabling contactless payments in retail and hospitality (e.g. - Retail Lockers, QSR Drive-Thru, etc.)



contactless



security



rugged



ethernet



TELIUM  
TETRA

Part of the new generation of self-service devices, the Open/1500 offers the best contactless payment acceptance to meet all your open payment requirements in transport, retail and hospitality.

#### Highest security

PCI PTS 5.1 certified, the Open/1500 is natively designed to meet local regulations and ensure long-term compliance.

#### Contactless/NFC payment acceptance

The Open/1500 enables all contactless payments methods: Visa, Mastercard, Amex, Discover, CUP, Interact, Flash, ApplePay, Google Pay and more.

#### Multiple use cases

The Open/1500 can manage multiple use cases from contactless ticketing in transportation to QSR Drive-Thru in hospitality to even retail lockers.

#### Compliant with multiple standards

The Open/1500 is compliant with standards for use in fixed or mobile environments across multiple industries (transport, retail, etc.).

#### Easy mechanical integration in embedded validators or other outdoor enclosures

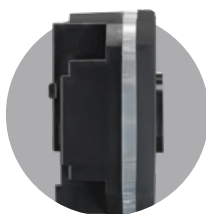
Thanks to its sleek design, the Open/1500 fits perfectly in a plastic validator in a bus or a train or into a kiosk enclosure for retail lockers and QSR drive-thrus. The part visible to consumers includes a backlit RGB and RGB LEDs.

#### Powerful processor with large memory

Based on the most powerful processor of Telium TETRA range with a large amount of memory, the Open/1500 has the flexibility to fit all open payment usage cases.

#### Highly ruggedized and durable

Thanks to its robust design (IK10) and high protection against water (IP65) the Open/1500 stands up to the most demanding indoor and outdoor environments. Thanks to an additional removable battery, the auxiliary battery life extends the device's overall life.



NAME		Open/1500
<b>Processor</b>	Application processor	Cortex A5
<b>Memory</b>	Internal External	512 MB Flash, 512 MB RAM MicroSD up to 32GB
<b>OS</b>		Telium TETRA
<b>SAM</b>		4 SAM ID-000 ISO 7816 (High Speed protocol) Studied for vibration resistance Accessible without dismounting the reader
<b>Card Reader</b>	Contactless NFC	EMV Level 1 compliant / ISO 14443 A/B/B* ISO 18 092 (card / reader / peer-to-peer modes)
<b>Battery</b>		Standard battery + additional removable battery
<b>User Interface</b>	Contactless landing zone LEDs indicator	RGB backlit landing zone 4 RGB LEDs
<b>Maintenance Interface</b>		Maintenance button and LED
<b>Audio</b>	Buzzer Polyphonic sound (wav reader)	Mono Through external loudspeaker (not provided)
<b>Terminal Connections</b>	USB  Serial I/O Sound	1 x USB Slave (JST connector) 1 x USB Host (JST connector) 2 x RS232 (JST connector) 2 x inputs and 2 x outputs (isolated) 1 x 2-pin connector for external loudspeaker
<b>Terminal Connectivity</b>	Ethernet 10/100 Bluetooth	1 x RJ 45 (PoE supported) BT 4.1 module (beacon mode)
<b>Power Supply</b>	External power supply	10W: 5V DC to 48V DC. Current : 2000 mA at 5V POE supported For automotive, range is : 12V DC to 24V DC Wake up mode
<b>Accessories</b>	Frame Optional	Plastic piece for rounding the landing zone JST to USB-A cables (0.3m, 1.15m, 2m) JST to DB9 serial cable (1m) 6-pin to 2-pin connector adapter (PSU)
<b>Terminal Size</b>	Overall: W x H x D mm	2.9x2.8x1.5" (75.5 x 72 x 37 mm)
<b>Weight</b>		4.7oz (134g)
<b>Environment</b>	Operating temperature Storage temperature Operating humidity EMC standards	-4°F to 158°F (-20°C to +70°C) -4°F to 158°F (-20°C to +70°C) 95% non-condensing at 131°F (+55°C) For fixed & mobile (road, railways) equipment
<b>Material</b>	Plastic	Compliant with fire & smoke standard (EN 45545-2 V0)
<b>IP</b>	Ingress protection	IP 65
<b>IK</b>	Shock protection	IK 10
<b>Security</b>		Certified PCI PTS 5.1 online & offline

USA\_Datasheet\_Open1500\_ICWL\_201006. All rights reserved. This document is not binding and the specifications above can be modified without prior consent. ©2020



www.ingenico.us

**ingenico**  
aWorldlinebrand