

Desk/1500

Interact with customers at the counter with the simplicity of a compact device



- Speed up the payment for Desk/series terminals
- Manage customer interface for any type of payment
- Integrate with any counter space thanks to a compact and nimble design

The Desk/1500 is a durable multi-payment acceptance solution designed to enhance customer experience at checkout.

Optimized checkout time

Payment validation is better when synchronised with the customer and however they want to pay. Equipped with a clear contactless zone, large keypad and an advanced consumer display, the Desk/1500 enhances usability and accelerates the checkout.

Designed for a limited space

The compact Desk/1500 fits easily on any counter, with options for either a mounted or unmounted terminal to suit the available desktop space. To save space, the Desk/1500 can act in place of the larger Desk/5000 terminal.

Highest security

The Desk/1500 is certified and fully compliant with the latest global and local PCI regulations to ensure long-term payment security compliance – protecting data for years to come.

Fast and unified integration

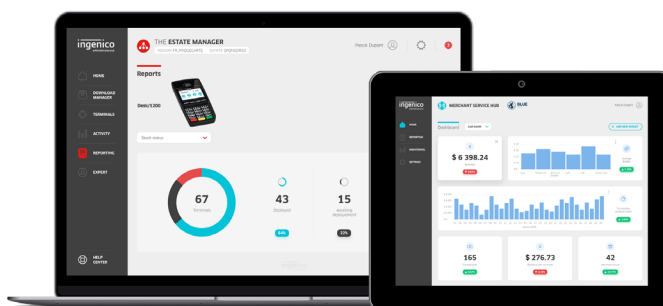
With plug-and-play installation and USB connection, the Desk/1500 connects to any Desk/series device, offering a speedy and unified solution.

Compatible with Ingenico's suite of services

The Desk/1500 works in unison with Ingenico's supporting service platforms, meaning merchants will have access to business services such as estate management. Software updates and day-to-day support deliver a hassle-free experience for those using this innovative range.



The Desk/1500 is supported by our Cloud Services



Processor	• Application & Crypto processor	• Cortex A5	•
Memory	• Internal	• 128 MB Flash, 128 MB RAM	•
OS		• Telium TETRA	•
Card Readers	• Magstripe • Smart card • Contactless	• ISO 1/2/3, 500K lifespan • EMV Level 1, 500K lifespan • EMV Level 1	• • •
Display	• Color	• 2.8" display, QVGA (320x240 pixels)	•
Keypad		• 15 keys, raised marking, 4 function keys	•
Audio	• Buzzer		•
Terminal Connections	• USB	• 1 USB Host	•

Terminal Size		• 7.08x3.26x1.69" (180x83x43 mm)	•
Weight		• 8.95 oz (254 g)	•
Environment	• Operating Temperature • Storage Temperature • Operating Humidity	• 32°F to 104°F (0°C to +40°C) • -4°F to 131°F (-20°C to +55°C) • 85% non-condensing at 104°F (+40°C)	• • •
Accessories	• Privacy shield	• Factory mounted • Field upgradable	Optional N/A
Security		• PCI PTS 5.x online & offline certified	•

USA_DATASHEET_DESK1500_IJWL_211123. All rights reserved. This document is not binding and the specifications above can be modified without prior consent. ©2021



www.ingenico.us

