

# Lane/5000

Create new retail checkout experiences with a world of Business Apps

- Enhance the purchasing experience by combining a large touchscreen display within a compact consumer-facing terminal
- Accelerate checkout by offering electronic signature and NFC acceptance
- Leverage a terminal designed for the most demanding retail environments





The most advanced designed-for-retail terminal, Lane/5000 combines payment acceptance and third-party apps to reinforce consumer engagement.

#### Highest security

The Lane/5000 is PCI-PTS 5.x certified. Its Telium TETRA OS uses the latest cryptographic schemes with future-proof key length. Additional anti-theft systems, such as Kensington locks, strengthen security.

#### All payment options

The Lane/5000 enables NFC couponing and wallet use cases, in addition to EMV Chip & PIN, Swipe & Sign and contactless.

#### User-friendly and intuitive interface

Featuring enriched multimedia capabilities and a 3.5" color touch screen, Lane/5000 enhances interactivity with consumer during payment and business Apps operations.

#### Designed for retailers

Conceived for intensive retail usage, the Lane/5000 features a durable signature - capacitive screen, heavy-duty magstripe and smartcard readers optimized for transaction speed, and a multipoint connector for easy integration.



#### Built-in data capture capabilities

With its optional camera, the Lane/5000 enables alternative payment schemes and unlimited possibilities for business Apps.

#### Seamless NFC payment experience

The Lane/5000 makes NFC acceptance easy. Its dedicated and visible reader zone is enhanced with smooth backlit glass. This ergonomic reader offers consumers a seamless experience while improving retailer efficiency.

#### Electronic signature

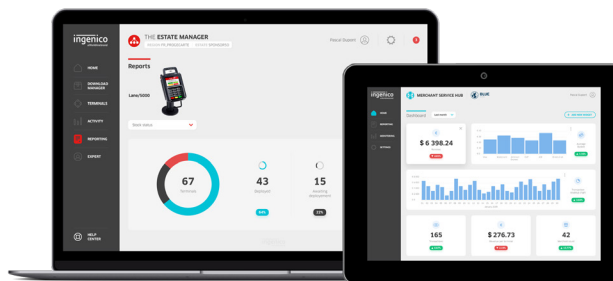
The Lane/5000 features durable signature capture capabilities for electronic payments, receipt storage and new business applications such as contracts, warranty programs and enrollment.

#### Compatible with Ingenico's suite of services

Keeping the solutions connected, the Lane/5000 works in unison with Ingenico's supporting service platforms, meaning merchants will have access to business services such as estate management reporting. Software updates and day-to-day support deliver a hassle-free experience.



Lane/5000 is supported by our Cloud Services



<b>Processor</b>	• Crypto & Crypto Processor	• Cortex A5	•
<b>Memory</b>	• Internal • External	• 512 MB Flash, 512 MB RAM • Micro SD up to 32 GB	• Optional
<b>OS</b>		• Telium TETRA	•
<b>SAM</b>		• 3	Optional
<b>Card Reader(s)</b>	• Magstripe • Smart Card • Contactless	• ISO 1/2/3, 500K lifespan • EMV Level 1, 500K lifespan • EMV Level 1 compliant	• • •
<b>Display</b>	• Color	• 3.5" backlight, QVGA (320x240 pixels)	•
<b>Touchscreen</b>	• Capacitive	• Finger & stylus (1000K lifespan signature)	•
<b>Keypad</b>		• 15 keys, raised markings, backlit	•
<b>Audio</b>	• Buzzer • Audio Jack • Speaker	• Stereo • Mono	• • •
<b>Video</b>	Video accelerator	• H264 codec	•
<b>Camera</b>		• 5M pixels autofocus (QR code library embedded)	Optional

<b>Terminal Connectivity</b>	• Wired • Wireless	• Ethernet 10/100 base T • Bluetooth Class 2 • Wi-Fi	• Optional Optional
<b>Terminal Connections</b>	USB  Serial	• USB Host • 2nd USB Host • USB Slave • 1 RS232	• • • •
<b>Power Supply</b>	• Powered USB • Powered RS232 • Powered Ethernet • External power supply	• 12V (USB retail) • 12V • PoE 802.3af compliant	• • • Optional
<b>Stand Mounting</b>		• Universal Payment Mount	Optional
<b>Terminal Size</b>		• 7.4" x 4.3" x 1.9" (189 x 111 x 48 mm)	•
<b>Weight</b>		• 12.3 oz (350 g)	•
<b>Environment</b>	• Operating temperature • Storage temperature • Relative humidity	• 32°F to 122°F (0 to +50°C) • -4°F to 131°F (-20 to +70°C) • 85% HR at 104°F (+40°C)	• • •
<b>Accessories</b>	• Privacy shield • Stylus kit	• PCI compliant	• Optional
<b>Security</b>		• PCI PTS 5.x	•



www.ingenico.us

**ingenico**  
aWorldlinebrand