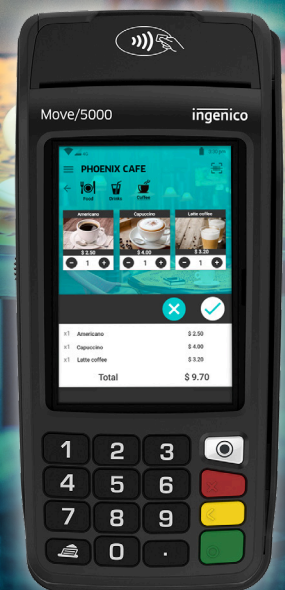


Move/5000

The perfect business companion
to enable mobile businesses

- Enhanced customer engagement at the point of decision
- Sleek design for high-end environments
- Intuitive interface for best-in-class user experience
- Never disconnect via automatic network switching



Designed for both indoor and outdoor use, the Move/5000 is the perfect business companion for hospitality, retail and small merchants, creating a seamless mobile shopping experience.

Fast introduction with Telium TETRA OS

The Telium TETRA OS integrates with existing payment methods to ensure a seamless introduction into a business' payment environment. Merchants also have greater control over the payment experience that they're offering customers by utilizing useful HTML5 applications.

Alternative payment methods

From mobile wallets to traditional payments, Move/5000 has it all covered. The Move/5000 contains payment hardware such as NFC couponing, chip & PIN, swipe and sign, contactless and more to facilitate the processing of alternative payment methods - including those enabled by camera, like QR codes.

Highest security

The Move/5000 is certified and fully compliant with the latest global and local PCI regulations. The Telium TETRA OS has been future-proofed with top-of-the-line cryptography software and Ingenico's world-class peer-to-peer encryption technology to keep data safe.



Maximized network availability

Even on the go, those using the Move/5000 terminal will have strong connections to the internet. That's because this terminal utilizes a wide range of wireless connectivity options and automatic network switching between 4G/LTE, Dual SIM, Bluetooth and Wi-Fi - all fully optimized so that connection will always be viable.



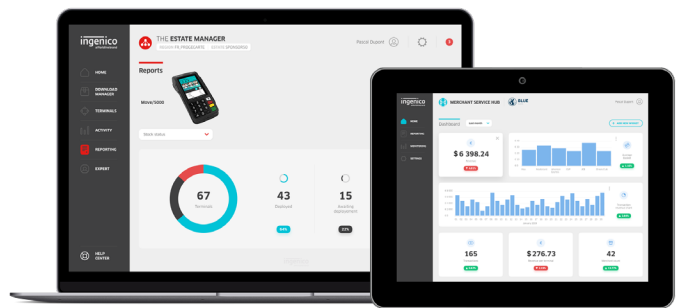
Optimal user-experience

The Move/5000 is dynamic by design and offers an intuitive user interface with powerful multimedia capabilities and a large 3.5-inch color touchscreen that helps create an optimized experience for customers. Its new and ultra-responsive rubber keypad improves PIN entry for customers.

Compatible with Ingenico's suite of services

Keeping the solutions connected, the Move/5000 works with Ingenico's supporting service platforms, meaning merchants will have access to business services such as estate management. Software updates and day-to-day support deliver a hassle-free experience for those using this innovative payment device.

The Move/5000 is supported by our Cloud Services



Processor	• Application & Crypto processor	• Cortex A5	•
Memory	• Internal • External	• 512 MB Flash, 512 MB RAM • MicroSD up to 32GB	• •
OS		• Telium TETRA	•
SIM		• 2 SIM	•
SAM		• 2 SAM	•
Card Readers	• Magstripe • Smart card • NFC/contactless	• ISO 1/2/3, 500K lifespan • EMV Level 1, 500K lifespan • EMV Level 1 compliant	• • •
Data Capture	• Positioning • Camera (only available with 4G option)	• GPS tracking • 5M pixels autofocus	Optional Optional
Display	• Color	• 3.5" backlit, HVGA (480x320 pixels)	•
Touchscreen	• Capacitive		•
Keypad		• 16 keys, raised marking, backlit	•
Audio	• Speaker • Audio Jack	• Mono • Stereo	• •
Video	• Video accelerator	• H264 codec	•

Thermal Printer	• Speed in lines/s • Paper roll cage	• up to 30 lines/s • 2 1/4" (58mm) width x 0" 40mm	• •
Terminal Connectivity	• LAN • Multicom	• WiFi and Bluetooth • 4G/LTE + WiFi + Bluetooth	Optional Optional
Terminal connections	• USB • Power Supply	• Host & Slave • Dedicated power Jack	• •
Battery	• Li-ion	• 2900mAh	•
Terminal Size		• 6.6x3.1x2.2" (169x78x57 mm)	•
Weight	• Terminal + Battery	• 11 oz (320 g)	•
Environment	• Operating Temperature • Storage Temperature • Operating Humidity	• 14°F to 122°F (-10°C to +50°C) • -4°F to 131°F (-20°C to +55°C) • 85% non-condensing at 104°F (+40°C)	• • •
Accessory	• Car Charger • Docking-station • Stylus Kit	• Charge-only • Modem • Ethernet 10/100 Base T • Bluetooth	Optional Optional Optional Optional Optional
Security		• PCI PTS 5.x & 6.x	•

