

# Self/4000

**Compact, engaging and scalable all-in-one payment solution for your self-service indoor and qualified outdoor kiosks**

- Accept all payment methods including magstripe, EMV, NFC/contactless and QR codes
- Improve the customer experience with the best-in-class self-service solution that offers a color screen, physical keypad, camera, sound alerts and additional support for visually impaired customers
- Simplify solution integration, operation and scalability
- Cut complexity in payment security implementation as a result of a full PCI PTS v5 configuration



Part of the new Self series range, the Self/4000 is an “all-in-one” device with a physical keypad that equips vending machines and kiosks for secure payment acceptance.

**Highest security and easy PIN entry**

Fully PCI PTS 5.x compliant, the Self/4000 meets the highest and latest hardware and software mandatory requirements. It also complies with SRED and provides flexible options with add-on modules and open APIs.

The backlit mechanical keyboard makes entering the PIN easier, especially for the visually impaired.

**All payment methods**

The Self/4000 accepts all payment methods including magstripe, EMV and contactless. In addition, the device facilitates scanning for alternative payment methods based on existing and future QR codes (AliPay or WeChat Pay, etc.).

The card reader has a customizable RGB light input which facilitates user guidance and reinforces the level of security.

**Simple UI with sound alerts**

The solution provides a simple and easy-to-use customer interface with the color display and an embedded mechanical keyboard. By connecting an external speaker to the Self/4000, the device supports sound alerts for enhanced usability.

**Highly ruggedized**

Due to its robust design (IK09) and protection against water (IP44) the Self/4000 stands up to the most demanding indoor and qualified outdoor environments and a wide variety of adverse environmental conditions.

**Staying connected easily**

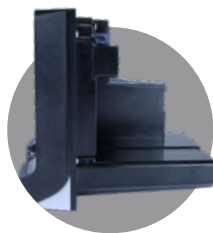
The addition of multi-drop-bus (MDB) connectors (for vending, parking meters and other use cases), Bluetooth, 4G connectivity, enables the Self/4000 to extend its capabilities and enable you to add optional modules that enhance flexibility.

**Seamless estate management**

The Self/4000 works seamlessly with Ingenico's estate management solution allowing integrators & operators to easily use and maintain the fleet of devices without complexity. It also allows them to remotely perform software updates and deliver day-to-day support for a hassle-free experience

**Protect your investment**

Ingenico's software components for self-service solutions from Telium 2 (including the MDB, EXE vending protocols, etc.) are compatible to work with the Self Series and its TETRA platform to facilitate the continuity of current business and scale further.



<b>Processor</b>	Application & Crypto processor	Cortex A5	●
<b>Memory</b>	Internal External	512 MB Flash, 512 MB RAM MicroSD up to 32GB	● ●
<b>OS</b>		Telium TETRA	●
<b>SAM</b>		2 SAM ID-000	●
<b>Card Readers</b>	Contactless Smart Card Magstripe Hybrid card reader (horizontal insertion) Shutter	EMV Level 1 compliant / ISO 14443 A/B/B' EMV Level 1 / 500k lifetime reads ISO 1/2/3, 500k lifetime reads Utilizes RGB backlit LEDs to help prevent device tampering Prevents dust and other non-card materials from entering the reader	● ● ● ● ●
<b>Display</b>	Color	2.27" backlit, landscape mode (640x240)	●
<b>Keypad</b>	Mechanical	16 keys, backlit keys	●
<b>Audio</b>	Buzzer Polyphonic sound WAV files	Mono Via external loudspeaker (not provided)	● ●
<b>Camera</b>	In front of the device	2MP - fixed focal (Honeywell barcode scanning library embedded)	●
<b>Terminal Connectivity</b>	Wired Wireless (in slot #2)	Ethernet 10/100, 1xRJ45 4G Bluetooth	● Optional Optional
<b>Terminal Connections</b>	USB Serial Sound MDB	1 x USB Slave (USB-B connector) 2 x USB Host (USB-A connector) 2 x RS232 (RJ11 connector) 1 x 2 PIN connector for external loudspeaker 1x MDB Master + 1x MDB Slave	● ● ● Optional
<b>Power Supply</b>	External power supply Power & MDB module (in slot #1)	9-16 V DC - 2 PIN connector 10-45V DC	● Optional
<b>Terminal Size</b>	EVA standard Overall W x H x D inches	SDM EVA 3.35 x 4.21 x 4.31" (85 x 107 x 109.6 mm)	Optional ●
<b>Weight</b>		22oz (620 g)	●
<b>Environment</b>	Operating temperature Storage temperature Operating humidity	-4°F to 158°F (-20°C to +70°C) -4°F to 158°F (-20°C to +70°C) 95% non-condensing at 131°F (+55°C)	● ● ●
<b>Material</b>	Plastic	Compliant fire & smoke standard (EN 45 545-2)	●
<b>IP</b>	Ingress protection	IP44	●
<b>IK</b>	Shock protection	IK09	●
<b>Accessories</b>		2 PIN to 6 PIN adaptor cable for standard PSU EVA mounting plate USB cables, serial cables PSU	● ● Optional Optional
<b>Security</b>		PCI PTS 5.1 certified (No commissioning required)	●

USA\_IC\_200910. All rights reserved. This document is not binding and the specifications above can be modified without prior consent. ©2020



www.ingenico.us

